

Hydro-Extractors

C240, C240R, C260, C260R, C290R

Features and benefits

- High G-factor for extremely high dewatering ability and improved drying economy
- Suspended constructing for low noise level
- R-models with fixed drum for use in laundrettes, ships and oil-rigs
- Security devices for lid and drum rotation for improved user safety
- Interchangeable voltage for improved flexibility
- Stainless steel casing and innerdrum for improved robustness



Options

- Payment: separate coinmeter and box, separate chipcard reader, CP connection

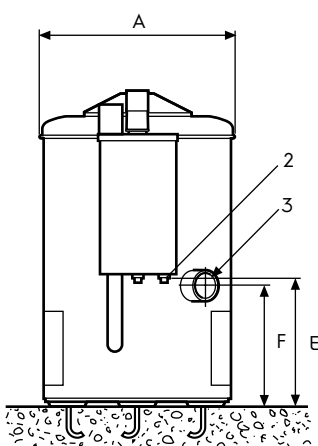
Main specifications		C240	C240R	C260	C260R	C290R
Rated capacity	kg/lb	8/18	8/18	12/26	12/26	18/40
Drum volume	litre	38	38	58	58	88
Extraction,	50 Hz	1450	1450	1450	1450	1450
	60 Hz	1740	1740	-	1740	-
G-factor,	50 Hz	440	440	575	575	705
	60 Hz	635	635	-	830	-
Consumption data						
Total time per extraction	min	5	5	5	5	5
Energy consumption per extraction	kWh	0.04	0.04	0.06	0.06	0.13

Produced according to ISO 9001 and ISO 14001.

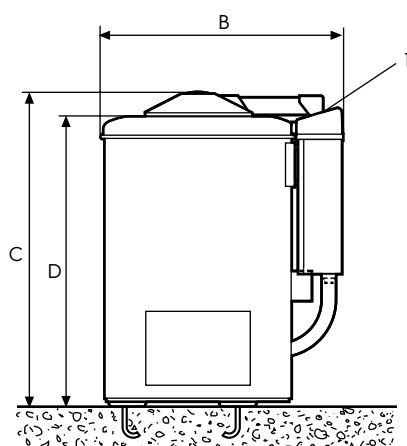
Certified with CB certificate for Low Voltage Directive and S-mark according to the Machinery Directive.

Protection class IP X4D.

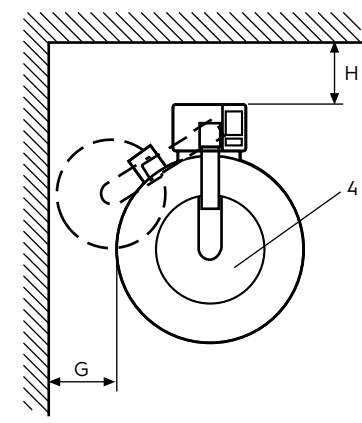
Electrical connections		C240	C240R	C260	C260R	C290R	
Voltage							
Motor	230V 3AC 50 Hz	kW(A)	0.33(10)	0.33(10)	0.33(10)	0.55(10)	0.65(16)
	208-240V 3AC 60 Hz	kW(A)	0.33(10)	0.33(10)	N/A	0.55(10)	N/A
	400-415V 3AC 50 Hz	kW(A)	0.33(10)	0.33(10)	0.33(10)	0.55(10)	0.65(16)
	440V 3AC 60 Hz	kW(A)	0.33(10)	0.33(10)	N/A	0.55(10)	N/A
Floor requirements							
Frequency of the dynamic force		Hz	25	25	25	25	25
Max floor load at extraction at 50 Hz		kN	1.0±0.10	1.0±0.25	1.4±0.15	1.9±0.4	3.0±0.6
Sound level							
Airborne sound level		dB(A)	<70	<70	<70	<70	<70
Shipping data							
		net, kg	67	91	98	126	171
		crated, kg	74	101	109	140	190
		boxed, kg	112	130	166	220	265
Shipping volume		crated, m ³	0.5	0.5	0.73	0.8	1.2
		boxed, m ³	0.79	0.79	0.88	0.88	1.38
Dimensions in mm							
A	Width	515	515	640	640	770	
B	Depth	660	660	785	785	910	
C	Height	850	910	870	980	1050	
D		780	840	800	910	990	
E		340	400	360	480	550	
F		320	390	330	420	470	
G		250	250	250	250	250	
H		500	500	500	500	500	
1 Control panel 2 Electrical connection 3 Drain ø75 4 Drum opening ø220 (C240/R), ø300 (C260/R), ø355 (C290/R)							



Rear side



Right side



6104

Top view